

Audience Demographics



Immuno-oncology Insights is designed for scientists and executives from big pharma, biotech, academia and government-funded institutions focused on checkpoint inhibitors, antibody and bispecific antibody therapeutics, oncolytic virus therapies, cancer vaccines and T cell/NK cell therapy fields. Our database currently contains **21,000 contacts**.

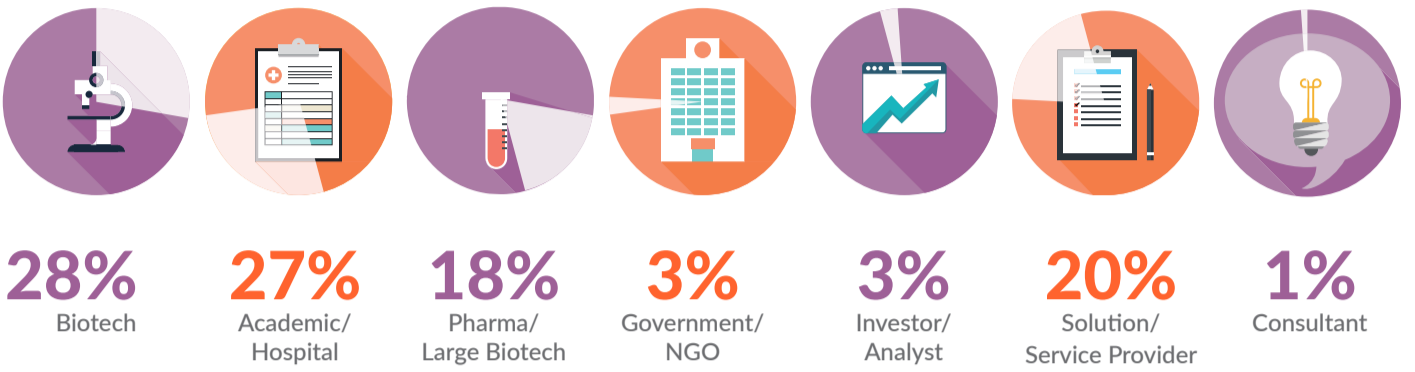
Data by Sector

- Prolific academic institutions and research hospitals, in particular those that generate spin-outs therapy candidates and technologies
- Investors and analysts
- Biotech companies, including those at a relatively early stage of development. Our research

shows that these earlier stage companies attend fewer industry conferences than those at a later stage, so Cell & Gene Therapy Insights offers an unparalleled opportunity to target this particular audience

- Solution and service providers

- Pharmaceutical companies and large biotechs
- Government-funded organizations (such as NIH) and NGOs

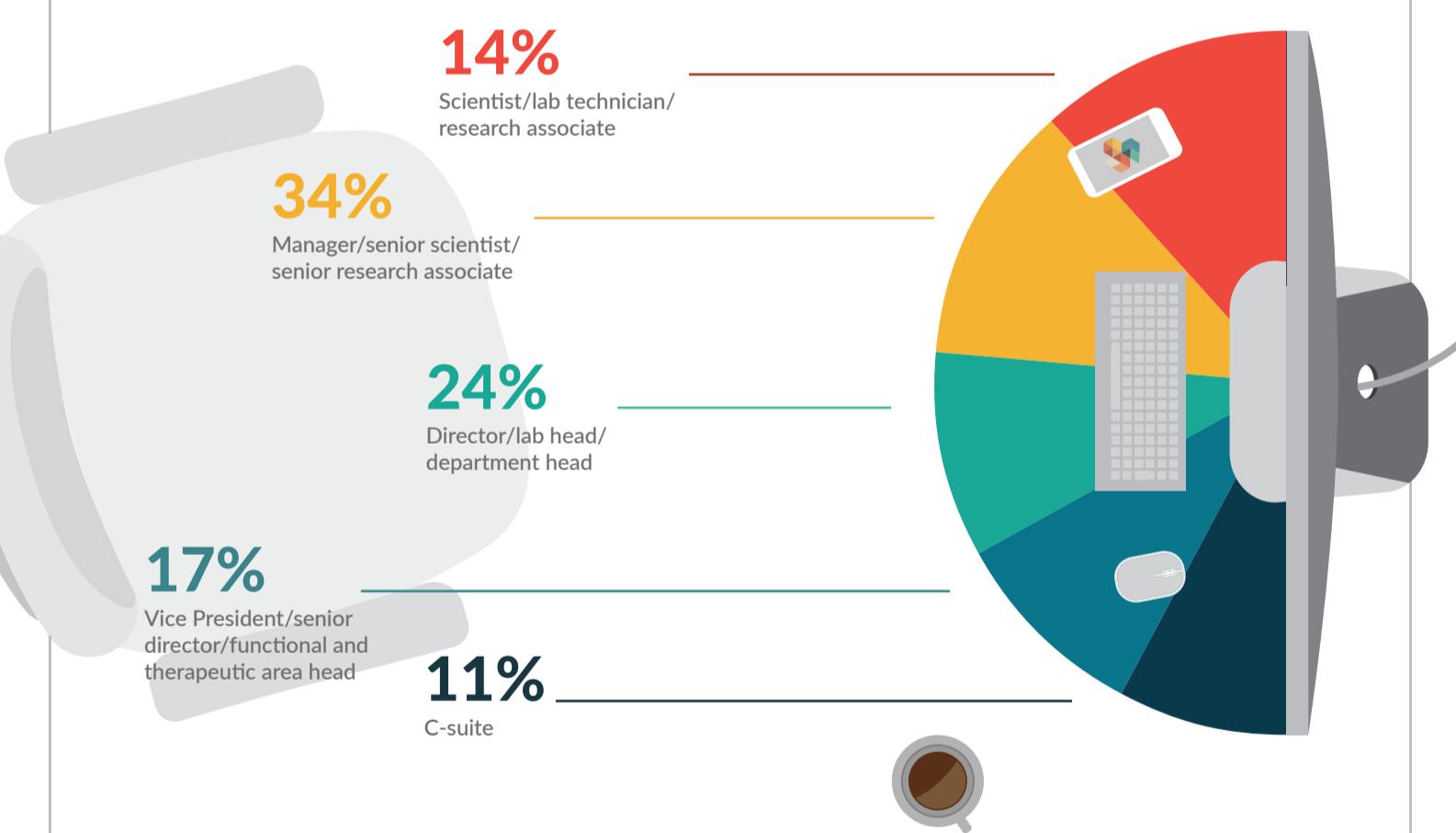
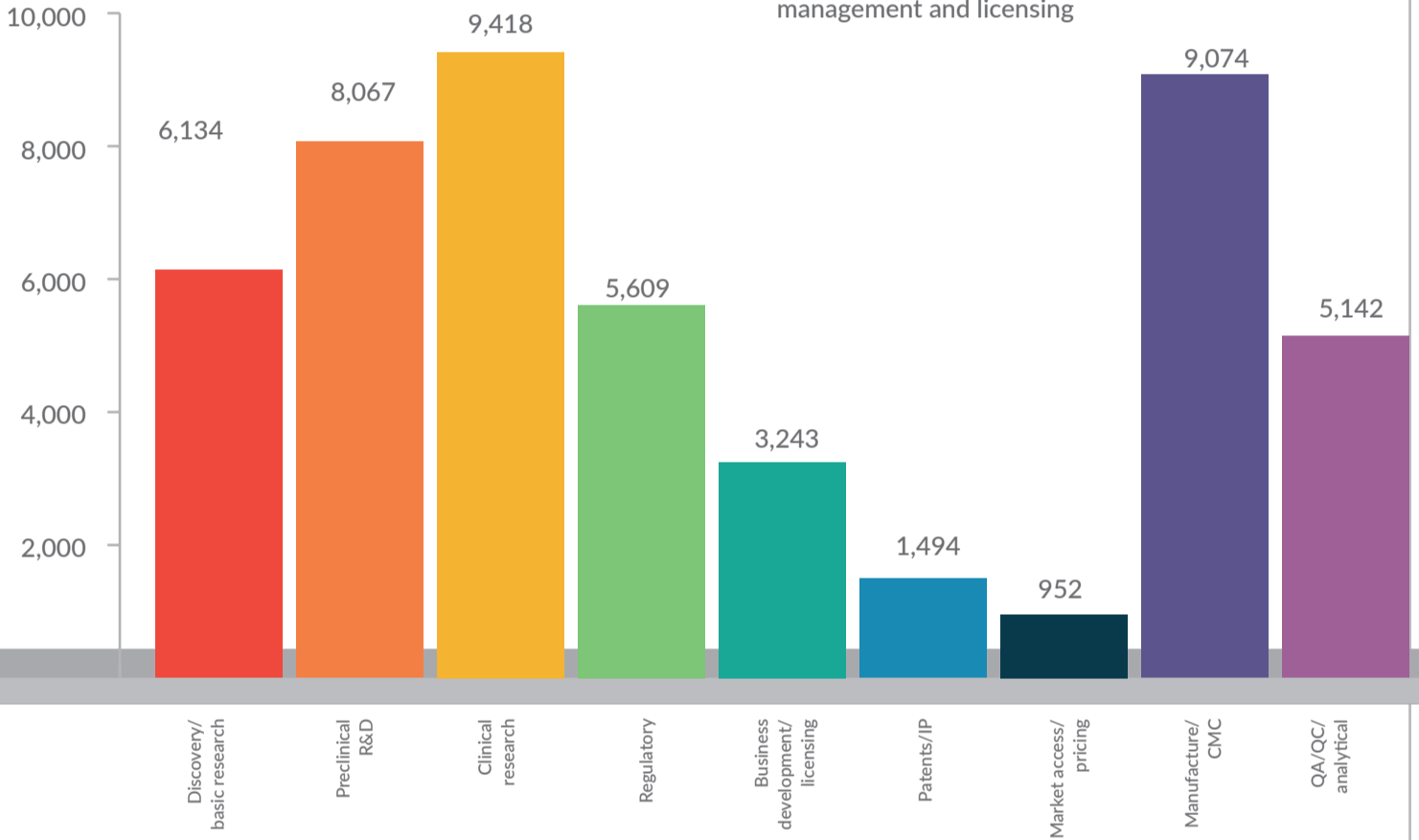


Data by Interest Area & Seniority

Immuno-Oncology Insights has a translational focus, featuring content of value to individuals along the R&D pipeline:

- Discovery and basic research
- Preclinical development and translational R&D
- Clinical research

- Product development, process development, operations, logistics and manufacture
- Regulatory affairs, QA/QC and validation
- Business development, corporate management and licensing



Data by Location

